

Map 7.02 Crawford County Sites Suitable for Business and Industry Expansion






Sites Suitable for Business and Industry Expansion

The map includes the location of five business/industrial parks in the county where future industrial uses are recommended to locate due to these locations being served by public sewer, water and transportation facilities. In addition to the business/industrial parks and consistent with the Land Use Element, commercial business are also recommended to utilize existing vacant business sites and parcels that are served by public facilities. In the future, as additional business/industry areas are identified by local units of government the map will be revised.



Legend

 Industrial Park

Roads

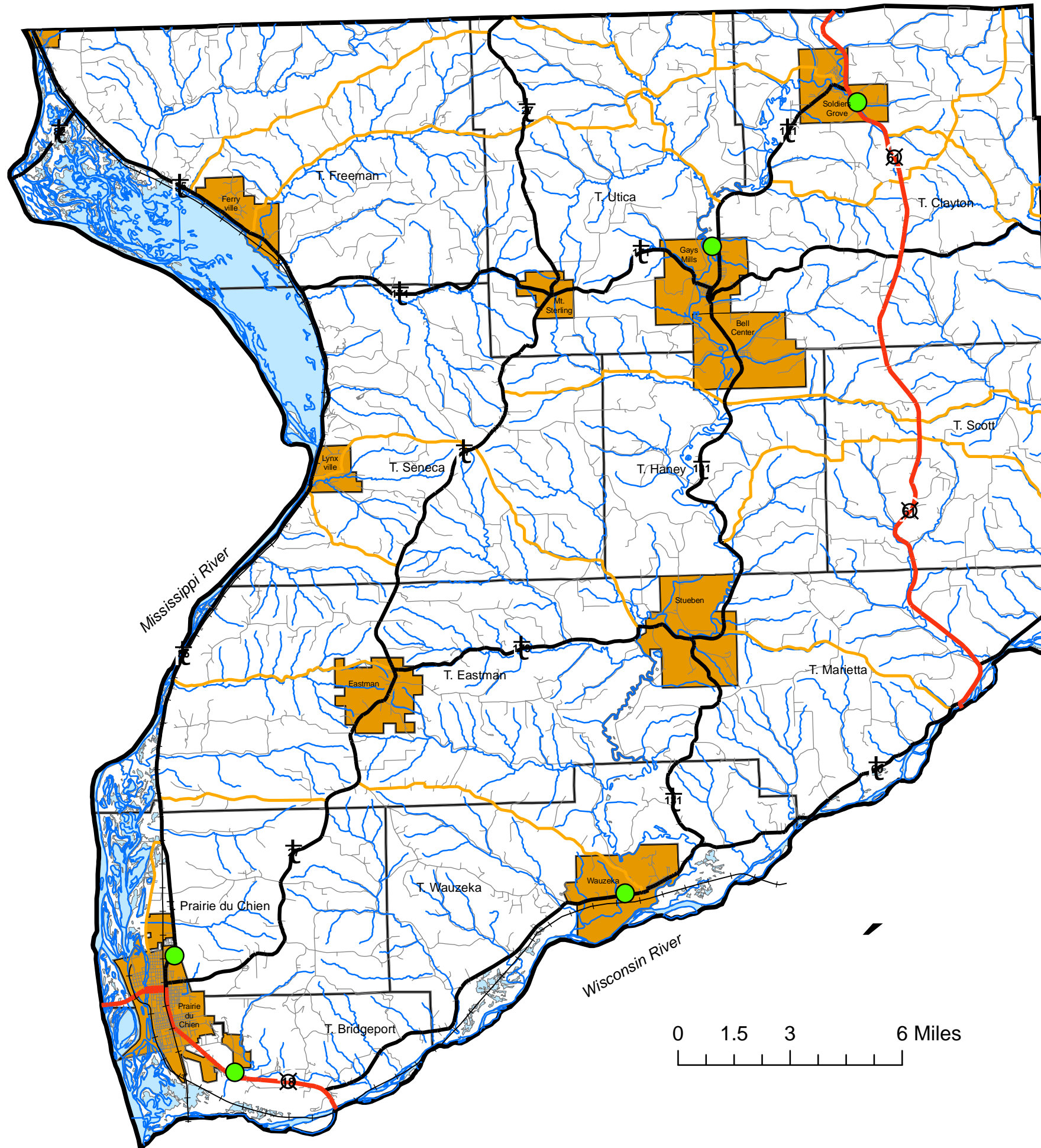
-  U.S. Highway
-  State Highway
-  County Road
-  Local Roads
-  Railroads

Water

-  Rivers and Streams
-  Open Water

Municipalities

-  City/Village Limit
-  Local Gov't Unit Boundaries



0 1.5 3 6 Miles



Map prepared by Jake Stansfield, University of Wisconsin - La Crosse Geography Intern for the Mississippi River Regional Planning Commission